

Co-Living

ASH-Oakland Estate-1



Full Turn Key Price:

\$637,405



4



3



2

Property Particulars

Lot: 1
Street:
Location: Warwick QLD,
Australia
Land Size: 672
Land Price: \$150,000
Build Size: TBA
Build Price: \$487,405
Design: Sangster

Status/Title Date: Registered

Est Rental/Yield: 4x rooms @
\$1,280/wk
(10.4%pa)

Body Corp: Yes

Type: Co-Living

Terms: \$1,000 holding fee to be
paid on land to proceed to
designing working
drawings. \$30k Solar Panel
& \$12,800 Furniture Pack
inc. price

This is an off-market package. Package information is subject to availability & subject to change without notice. All images shown are for illustrative purposes only.

Co-Living

ASH-Oakland Estate-1



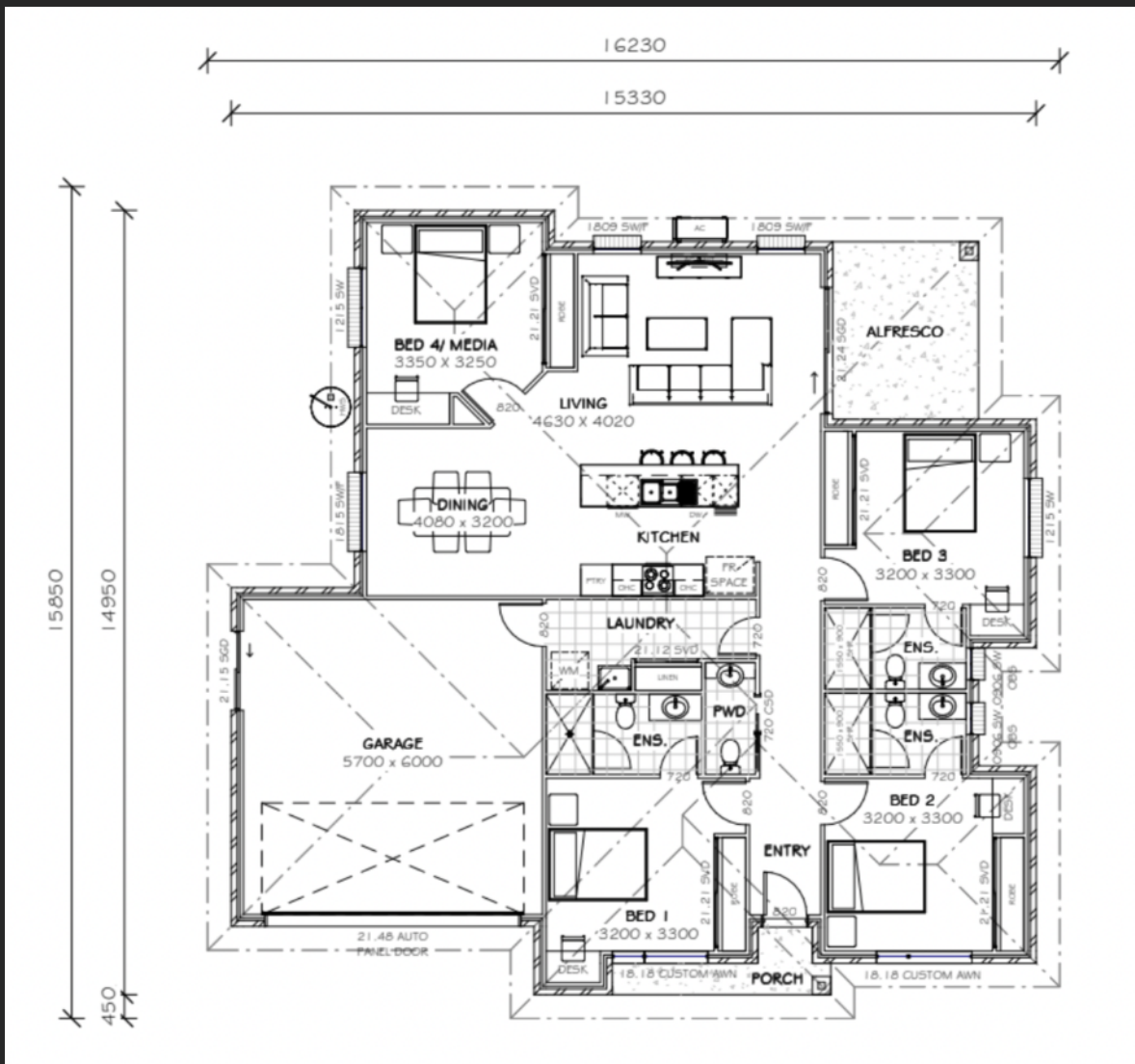
4



3



2



Inclusions

- * Fully rendered Hebel construction (superior to brick or cladding)
- * Quality Steel Frame
- * 6 star energy efficiency
- * Solar with battery & back up to estate battery (power system that is off the grid—avoid Creeping electricity costs)
- * Turf & 12 SQM landscape gardens
- * Fully fenced
- * Concreted driveways, paths & patios (including visitor carpark) 5 car accom.
- * Split AC to living area & Brms with remotes
- * Lever door handles throughout
- * Fully painted with Taubmans quality paints
- * Bellissimo LED appliances
- * Clothesline, TV antenna & letterbox
- * Carpet & Tiles throughout
- * Vertical blinds to all windows

- * Safety screens & window locks
- * Security screen to external doors
- * 20 Pack LED Downlights
- * Fan lights to bedrooms & living area
- * Garage remote controls
- * 12Mth Maintenance period
- * Raised Portico with 2 feature up/down lights
- * Co-living common area furnishing pkge
(not incl. brms—see accompanying Inventory)
- * Land is registered

The floorplan provided herein is intended for illustrative and viewing purposes only and should not be relied upon as a formal or exact representation of the property. It is not to scale and any measurements or dimensions are approximate. This floorplan does not constitute any form of advice, representation, or arrangement. Prospective buyers should refer to the official sales contract for all definitive details, specifications, and exact measurements related to the property for any official sales purposes. Any reliance you place on the floorplan is strictly at your own risk.